

# CERAMAGE®

## GUM COLORS

### INSTRUCTIONS FOR USE

The natural appearance of gingival parts is very important, especially when producing high-quality telescopic- and implant supported supra constructions.

The CERAMAGE GUM COLOR FULL SET was developed to enable gingival reproduction for any patient's situation. In addition to the well proven GUM composites of the CERAMAGE system this supplementing range of pastes and effect colors offers unlimited possibilities for the reproduction of lifelike gingival reconstructions.

Moreover, different viscosities of the pastes and gels facilitate an efficient operation and an aimed placement of the desired effects.

#### Contents

---

1. System components	
1-1. Indications	2
1-2. Components and shades	2
2. Application	
2-1. Layering technique for gingival reproduction	3
2-2. Pre-treatments	3
2-3. Application of M.L. Primer	3
2-4. Application and light curing of Pre-Opaque	3
2-5. Application of translucent paste into the undercuts and cavities of the frames	4
2-6. Application of light curing Opaque	4
2-7. Application of light curing GUM pastes	4
2-8. Application of Flowable Composite Resin	5
2-9. Application of Modelling Liquid	5
2-10. Application of Oxy-Barrier	5
3. Contouring, finishing and polishing	
3-1. Contouring	6
3-2. Finishing and Pre-polishing	6
3-3. High-lustre polishing	6
4. Examples for use	
4-1. GUMY 1-3	7
5. Curing	
5-1. Curing time	7

# 1. System Components

## 1-1. Indications

A composite for the creation of gingival shaded areas when producing veneers, anterior and posterior restorations as well as telescopic and implant-supported supra constructions

## 1-2. Components and shades

### CERAMAGE OPAQUE

Opaque paste for masking the color of the framework

In addition to the basic shades the following special shades are available in the CERAMAGE GUM COLOR FULL SET:

- **GUM-O (GUM Opaque)**  
Opaque for the foundation of the frame color for the GUM pastes
- **WO (White Opaque)**  
Opaque for mixing with the basic and GUM-Opaques for adjusting the value

### CERAMAGE COMPOSITE

Composite for the reproduction of the gingival shades

- **GUM-L (GUM Light)**  
For the reproduction of bright gingival shades
- **GUM-D (GUM Dark)**  
For the reproduction of dark gingival shades
- **GUM-Or (GUM Orange)**  
For the reproduction of orange-colored gingival shades
- **GUM-T (GUM Translucent)**  
For the reproduction of reddish translucent gingival areas

### CERAMAGE FLOWABLE COMPOSITE RESIN

Flowable pastes, for filling even the smallest areas

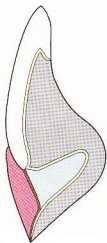
Used for the modelling of interdental areas or the forming of protruding alveolar areas and soft tissue parts

- **F-W (F White)**  
For mixing of brighter shade variants of the following F-GUM pastes
- **F-GUM-Br (F-GUM Brown)**  
For the reproduction of reddish-brown shaded soft tissue parts
- **F-GUM-V (F-GUM Violet)**  
For the reproduction of violet shaded soft tissue parts
- **F-GUM-R (F-GUM Red)**  
For the reproduction of reddish shaded soft tissue parts

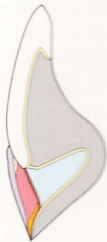
## 2. Application

### 2-1. Layering technique for gingival reproduction

Basic build up



Individual build up



- Pre-Opaque
- Opaque
- GUM-T
- GUM-L (GUM-D / GUM-Or)
- F-GUM-R (F-GUM-V)
- F-W (F-ODA3)

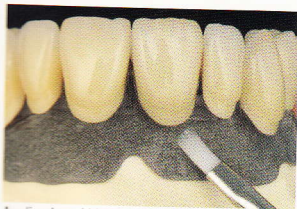
### 2-2. Pre-treatments

After contouring of the veneers sandblast the remaining metal frame with aluminium oxide and clean with a steam cleaner. Then dry carefully.

### 2-3. Application of M. L. Primer

Apply M. L. Primer to the remaining surface of the metal frame with a small brush and dry for 10 seconds.

**Note:** Since M.L. Primer contains solvents, replace the cap immediately after use. Dispensed liquid should be used immediately. After applying M.L. Primer, clean the Uni Brush No. 4 with CERAMAGE Cleaner. The brush should not be cleaned with self-curing resin liquid.



Application of M.L. Primer onto the prepared frame construction

### 2-4. Application and light-curing of Pre-Opaque

Apply the Pre-Opaque with a Uni Brush No. 4 to the undercuts of the retention beads and into the cavities of the bridge pontics or the pontic supports and light-cure. Ensure that Pre-Opaque flows completely into the undercuts of the retention beads.



Apply Pre-Opaque completely to the undercuts areas of the retention beads

## 2. Application

### 2-5. Application of translucent paste into the undercuts and cavities of the frames

Before the application of the final opaque layer the different thickness between the bridge elements and undercuts and construction based cavities of the framework should be filled with translucent paste.



The translucent paste should be applied and cured in single layers

### 2-6. Application of light-curing Opaque

Apply the ready for use paste opaques pure or mixed on the cured Pre-Opaque with the Uni Brush No. 4 and polymerise. Always apply a thin layer of opaque and repeat the procedure 2 to 3 times (apply opaque and light-cure) to cover the framework. Pay absolute attention to a proper completion to composite veneers which are already produced.



For the covered opaque layer the opaques can be used pure or mixed with other opaques from the CERAMAGE composite system

### 2-7. Application of light-curing GUM pastes

Apply the GUM pastes aimed in layer thickness of max. 2.0 mm, build up the desired anatomical shapes and light-cure. Extensive restorations require several intermediate polymerisations. Work segmentally when applying the gingival parts and fill the joints of the segments with GUM composite finally.



For the basic build up of the gingival parts it is recommended to use at first dark and medium shaded GUM pastes



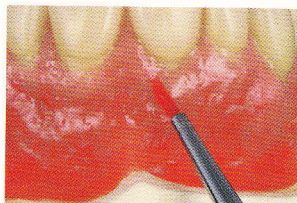
The additional individualisation can be done with intensive or Flowable Resin-pastes



The dominant papilla and the transition to the cervical teeth areas should be build up with light GUM pastes

## 2-8. Application of Flowable Composite Resin

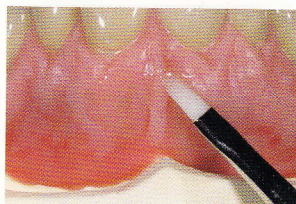
Flowable Composite Resins are more flowable than conventional CERAMAGE composite pastes and allow a precise placement of smallest amounts of composite. Use these resins pure or mixed for modelling of the interproximal areas and for forming of the protruding alveolar areas.



## 2-9. Application of Modelling Liquid

This special liquid is used when applying composite. In addition it can be applied to the surface of the paste after light-curing or after contouring as a wetting agent to facilitate adding further material.

**Note: Do not use Modelling Liquid as wetting agent when applying Flowable Composite Resin subsequently!**



## 2-10. Application of Oxy-Barrier

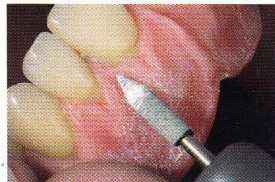
CERAMAGE Oxy-Barrier is applied to avoid air contact before the final light-curing of CERAMAGE. Applying it to the surface of CERAMAGE composite prevents an inhibition layer forming on the surface during light-curing.



## 3. Contouring, finishing and polishing

### 3-1. Contouring

Due to its high ceramic filler content, CERAMAGE composite is extremely abrasion-resistant and exhibits outstanding physical properties. Therefore, polymerised composite surfaces must be trimmed with matched rotary instruments. It is not advisable to use cutters or coarse diamond burs! The surface can be trimmed to achieve the desired texture and shine using the items in the CERAMAGE Finishing & Polishing Kit .



Contour the anatomical details with Dura-Green stones



The exact anatomical shaping of the interproximal- and papilla areas can be achieved simply with Robot Carbide Fissur Bur

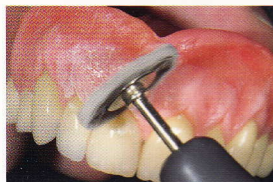
### 3-2. Finishing and Pre-polishing

After contouring with Dura-Green stones follows the additional pre-polishing with two working steps:

First with CompoMaster Coarse silicone polishers, secondly with DURA-POLISH ( $Al_2O_3$ ) polishing paste.



Finish the with Dura-Green stones contoured surface details with CompoMaster Coarse silicone polishers

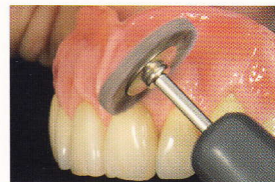


For the preparation of the high-lustre polishing use DURA-POLISH  $Al_2O_3$  polishing paste with a medium strong brush

**Note: Overheating must be avoided during finishing and polishing! Caffeine and nicotine can cause discolorations on unpolished surfaces.**

### 3-3. High-lustre polishing

After pre-polishing with DURA-POLISH use the diamond impregnated polishing paste DURA-POLISH DIA for increased surface gloss.



For the high-lustre polishing use DURA-POLISH DIA with a brush or wool mop



The high lustre polished result shows no difference to the natural example

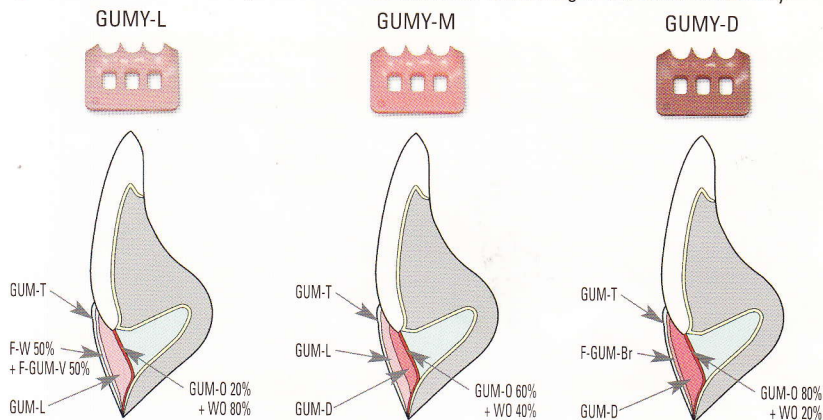
**Note: For a high-lustre polish apply DURA-POLISH DIA with a brush and polish with light pressure.**

## 4. Examples of use

### 4-1. GUMY 1-3

In addition to our shade guides three different gingival shaded shade guide holders (L, M, D) are available for a patient specific determination of the gingival shade during determination of the tooth shade – the GUMYs.

Placing the shade guides in a GUMY you always achieve an optimal match with the patient's gingiva and at the same time you have an instrument for controlling in the dental laboratory.



## 5. Curing

### 5-1. Curing time

Light-Cure	Solidilite EX	UNI-XS Dentalcolor XS – Kulzer
Pre-Opaque	1 min	1.5 min
Opaque	3 min	3 min
Composite (pre-light-cure)	1 min	1.5 min
Flowable composite (pre-light-cure)	1 min	1.5 min
Pontic	3 min	3 min
Final	5 min	3 min

Light-Cure	Liculite / de Trey Polylux HDS 400 / Dreve	Labolight LV II + LV III GC
Pre-Opaque	3 min	2 min
Opaque	5 min	3 min
Composite (pre-light-cure)	3 min	2 min
Flowable composite (pre-light-cure)	3 min	2 min
Pontic	5 min	3 min
Final	10 min	5 min

**Note:** CERAMAGE composites can be light-cured in all light curing units recommended by SHOFU. The types of unit and light-cure times are shown in the curing-chart. In order to guarantee a perfect light-curing of the CERAMAGE materials, take care that the work to be cured is placed at optimal position to the ray of light-curing. Please consider the corresponding manufacturer's instructions when operating the light curing devices.

CE 0120



**Manufactured by**

SHOFU INC. 11 Kamitakamatsu-cho, Fukuine, Higashiyama-ku, Kyoto 605-0983, Japan

SHOFU INC. Singapore Branch 10 Science Park Road, #03-12, The Alpha, Science Park II, Singapore 117684

SHOFU DENTAL CORPORATION 1225 Stone Drive, San Marcos, California 92078-4059, USA

SHOFU UK Riverside House, River Lawn Road, Tonbridge, Kent, TN9 1EP, UK

SHOFU DENTAL TRADING (SHANGHAI) CO., LTD. No. 645 Jiye Road, Sheshan Industrial Park, Songjiang, Shanghai 201602, China

EC [REP] SHOFU DENTAL GmbH Am Brüll 17, 40878 Ratingen, Germany

[www.shofu.de](http://www.shofu.de)