

CERAMAGE®

PURE AESTHETICS



**ZIRCONIUM SILICATE MICRO CERAMIC
INDIRECT RESTORATIVE**



SHOFU DENTAL CORPORATION

Call for Information 800 827 4638 www.shofu.com

S A N M A R C O S C A L I F O R N I A

INDIRECT RESTORATIVE INTEGRATED WITH ZIRCONIUM SILICATE



Joe Weisz, BSC, CDT

Achieve **PURE** aesthetic results with CERAMAGE a zirconium silicate integrated indirect restorative for both anterior and posterior regions.

A PFS (Progressive Fine Structure) filling of more than 73% plus an organic polymer matrix delivers superior flexural strength, elasticity and unsurpassed polishability.

As a manufacturer of direct and indirect filling crown and bridge systems, SHOFU set new standards for light-curing materials. These materials fulfill the clinical demands of dentists, dental technicians and patients for aesthetic results with optimal plaque resistance and physical properties.

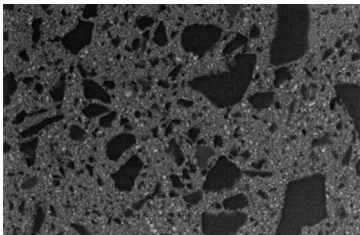
CERAMAGE provides an extraordinary combination of durability and strength. Harder than other light-cured materials, it is extremely resilient and more elastic than conventional ceramics. CERAMAGE is an excellent solution for durable posterior restorations.

TECHNOLOGY AND INNOVATION

- Flexural and compressive strength beyond 140 MPa
- Excellent abrasion resistance of opposing dentition
- Transmission and diffusion of light with a refractive index similar to natural teeth
- Superior color stability over 5 years
- Perfect viscosity and modeling properties
- PFS provides superb polishability and is effortlessly achieved
- Microstructure resists plaque accumulation

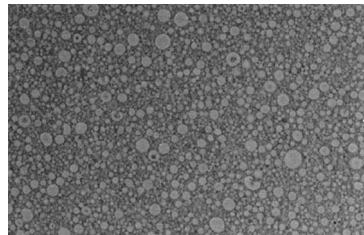
SCANNING ELECTRON MICROSCOPY

CONVENTIONAL COMPOSITE



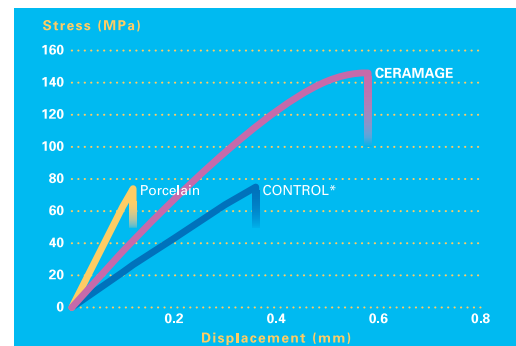
Inconsistent particle size between glass-fillers and matrix

CERAMAGE



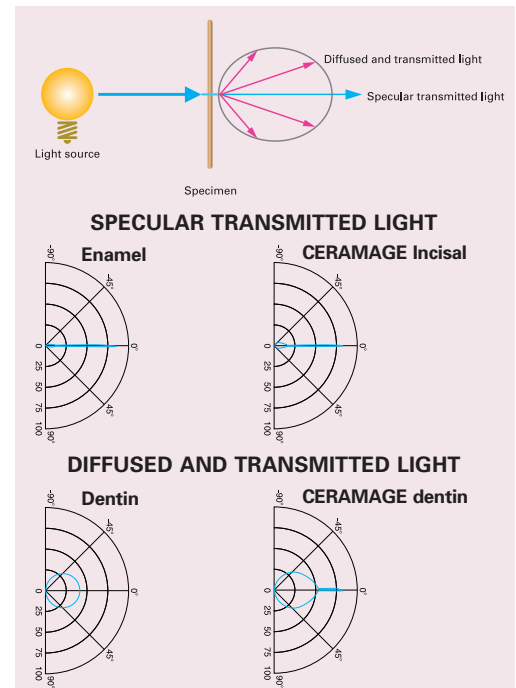
The homogenous microstructure gives CERAMAGE excellent physical properties

FLEXURAL STRENGTH



*Leading Indirect Restorative

TRANSMISSION AND DIFFUSION OF LIGHT



NATURAL AESTHETICS

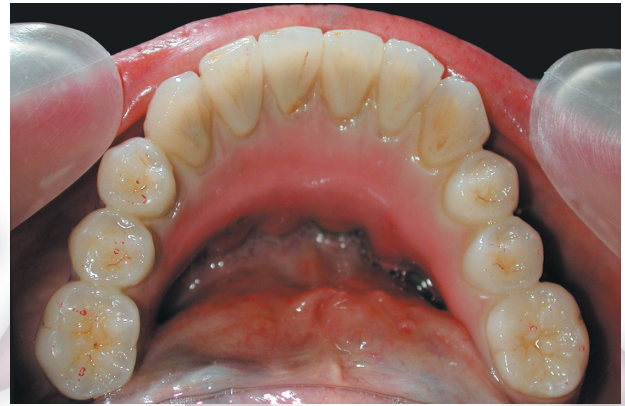
The natural light transmission and fluorescence of the CERAMAGE pastes allow restorations to exhibit a vivid brilliant appearance in the patient's mouth – which exceed patient expectations.

CERAMAGE virtually replicates the appearance and light diffusing properties of dentin and enamel.

The CERAMAGE PFS filler makes it possible to immediately match the light transmission properties of surrounding teeth without firing.

A complete selection of translucent effect color modifiers provide the freedom to solve inter-oral challenges easier than with porcelain.

The build-up of metal-free inlays and onlays are simple and fast to fabricate. The structure and composition of CERAMAGE allows controlled application and modeling, even on small anatomical details.



Ohata, MDT



Ohata, MDT



Asano, CDT



Asano, CDT

CERAMAGE INDIRECT RESTORATIVE DESIGNED TO BE WORRY-FREE

- CERAMAGE[™] is the newest Zirconium Silicate technology – 5 year clinical support
- CERAMAGE[™] accurately reproduces enamel and dentin
- CERAMAGE[™] will not vitrify, which means no milky appearance or graying effects
- CERAMAGE[™] works with all metal* – no CTE concerns because it light cures
- CERAMAGE[™] superior handling non-sticky formula – requires no stacking
- CERAMAGE[™] simulates the wear of natural dentition, excellent for implants, inlays, onlays, crowns and bridges
- CERAMAGE[™] allows for conventional cementation and is extraordinarily biocompatible

*titanium, high nobel, non-precious



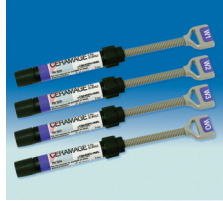
CERAMAGE



CERAMAGE AB SET (PN 1801)
Economic introduction to this indirect restorative system that enables natural reproduction



CERAMAGE CD SET (PN 1802)
A practical addition to the CERAMAGE AB set



CERAMAGE WHITENING SHADES: WO "Super White" (PN 1924), W1 (PN 1925), W2 (PN 1926) and W3 (PN 1927)
Brighter than the "classical" tooth colors



CERAMAGE 8 COLOR STANDARD SET (PN 1806)
All components for the production of aesthetic restorations in the shades A1-A4, B2, B3 and C3



CERAMAGE INTRO SETS: COLOR A2 (PN 1807) and COLOR A3 (PN 1808)
Contains all necessary components: M.L. Primer bonding system and the brush for application of the opaques



CERAMAGE GUM COLOR SET (PN 1803) and CERAMAGE FULL GUM COLOR SET (PN 1804)
Re-establish naturally appearing gingival anatomy.

Technical Overview

CERAMAGE's unique composition and uniform structure give it similar characteristics to the finest ceramic materials, as well as, wide applications for both metal and metal-free anterior and posterior restorations.

	CERAMAGE Crown and Bridge Composite	CERAMAGE Flowable Composite Resin
Vickers Hardness (MPa)	726	392
Flexural Strength (MPa)	146	132
Modules of Elasticity (GPa)	10.7	6.0
Compressive Strength (MPa)	354	303
Indirect Tensile Strength (MPa)	62	58
Polymerization Shrinkage (Vol. %)	2.5	3.3
Toothbrush Abrasion (%)	0.43	0.74
Enamel Abrasion of the Antagonist (µm)	3.2	2.5
Working Time (min.)	>30	25



MANUFACTURER

SHOFU INC. 11 Kamitakamatsu-cho, Fukuine, Higashiyama-ku, Kyoto 605-0983, Japan

SHOFU INC. Singapore Branch 10 Science Park Road #03-12, The Alpha, Science Park II, Singapore 117684

SHOFU DENTAL CORPORATION 1225 Stone Drive, San Marcos, CA 92078-4059, USA

SHOFU DENTAL PRODUCTS LTD. Duke's Factory, Chiddingstone Causeway, Tonbridge, Kent, TN11 8 JU, UK

SHOFU DENTAL SUPPLIES (Shanghai) CO. LTD. No.645 Jiye Road, Sheshan Industry Park, Songjiang 201602, Shanghai, China

EU REPRESENTATIVE: SHOFU DENTAL GmbH Am Brüll 17, 40878 Ratingen, Germany