



**BurButler by Shofu Dental**

I am quite confident that you weren't anxiously awaiting your copy of *Dental Economics* this month to read a review of a bur block. But alas, here we are. I really love writing about glitzy new tech, but sometimes, something so seemingly basic as a new bur block comes along and catches me by surprise. That's what the BurButler by Shofu Dental did.

Since my practice opened six years ago, I have been in charge of expensive little details, like burs, but I put little thought into my bur blocks. The blocks I was using until now—basic metal-hinged bur blocks—showed a lack of thought and were beginning to show their age, despite being functionally sound. Thousands of autoclaving cycles will do that, I guess. About once a month, I would take a bur out of an old block and haphazardly spill its contents all over my bracket table. My assistants hated that because it required them to play "pick-up sticks" to get all of the little burs back into their rusty homes. BurButler can eliminate that frustration, plus a lot more.

BurButler is a fully autoclavable silicone bur block with a clear plastic lid. Yes, even the clear plastic lid can be autoclaved. The lid can be removed with one hand, something I struggle to do with my traditional metal bur blocks. (Six years of use means that hinging the lid open is a two-handed job.) BurButler has an impressive design that allows it to hold burs tightly enough that the entire block could be turned upside down, and *no burs would spill*. Despite this tenacity, I can still easily remove individual burs when necessary.

My metal bur blocks have the traditional three rows of holes for burs—many of which go unfilled in my setup. The middle burs are always difficult to grab without using two hands. Engineered to hold friction-grip, latch, and short-shank burs, the BurButler has holes for burs around its edges, so there aren't any pesky middle burs to fight the block for.

Shofu recommends turning the clear lid over during procedures and putting the used burs in it as they come out of your handpiece. I think that's a good

idea. There is no metal to rust. There are no moving parts to break. BurButler is dependable and worry-free. And it's available in five different colors, so you can color-code to your choosing. After using BurButler for a few weeks, I see clear advantages; it eliminates some of the frustrations involving managing burs in a dental practice. Sharp single up the middle for Shofu!



# BurButler

## Unique Silicone Block Grips All Burs

BurButler is a silicone bur block that will hold all burs securely in place, eliminating the risk of spilling. The unique patented hole design with reverse fluting allows the burs to stay in place while disinfecting or autoclaving. The high temperature resistant silicone base material makes for easy insertion and removal of the burs. Available in a variety of colors to help organize for practice efficiency.

- Ideal for all shanks including FG, CA, and short shank – mix and match burs
- Easy to insert and remove
- Long-lasting and durable, no moving parts or replacement plugs
- Removable lid can be used as base during procedures to discard used rotary instruments
- Fully autoclavable – maintains sterility
- Simple one hand lid removal
- Secure clear lid for easy viewing and safety
- 10 hole blocks available in 5 assorted colors



Visit [www.shofu.com](http://www.shofu.com) or call **800.827.4638**

Every dental assistant knows the frustration of fishing out burs from the ultrasonic and to open a sterilization pouch, only to find most of your burs are now loose in the pouch and not in their place in the bur block! The BurButler has eliminated these issues for me.

**Brenda Kirken, RDA**  
Oxford, Michigan

Finally a bur block that burs do not fall out or rust! Thanks Shofu. I love this product!  
**Debbie Thomason, EFDA**  
Kentucky

### Order Information - 10 Hole

- 8210AOC - Amber Orange
- 8210APC - Amethyst Purple
- 8210DWC - Diamond White
- 8210RPC - Ruby Pink
- 8210SBC - Sapphire Blue
- 8210LID - Replacement Lid



Shofu Dental Corporation  
1225 Stone Drive  
San Marcos, CA  
92078-4059, USA

GRIPS ALL SHANKS



Patented starburst hole design



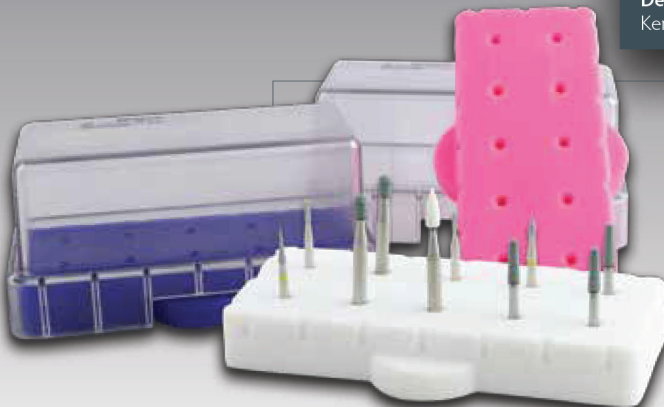
Resists high temperature and distortion



Assorted colors for practice organization



Mix and match burs – holds FG, CA, and short shank



Unique Gripping Bur Block