

BeautiSealant

Fluoride Releasing Pit & Fissure Sealant System



Official Partner



Minimally Invasive
Cosmetic Dentistry

FLUORIDE RELEASING PIT A DIFFERENCE YOU CAN

BeutiSealant

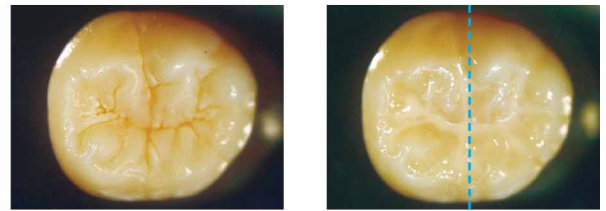
For decades, dentists and hygienists have had no alternative but to use phosphoric acid etching as a necessary evil to improve the bondability of dental sealants. In doing so, they have not only lost countless hours to these laborious steps, but also have inevitably destroyed otherwise healthy tooth structure with the damaging effects of harsh acids.

Driven by modern concepts of Minimally Invasive and Cosmetic Dentistry, and recent developments in adhesives technology, Shofu has created a faster, easier, and gentler sealant system that eliminates the need for phosphoric acid etch and rinse steps entirely, while still maintaining equal or better shear bond strengths.

- High shear bond strength **without phosphoric acid etch or rinse required**
- Ideal handling and viscosity; eliminate voids with bubble-free consistency
- Radiopacity equal to dentin; 0.92 Al:mm
- Unique cariostatic properties of S-PRG fillers
- 30 second application; Four easy steps
- BPA- and HEMA-free

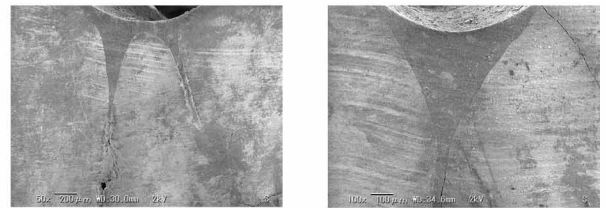
Gentle on Enamel

BeutiSealant is BPA- and HEMA-free with dual adhesive monomers that thoroughly penetrate and prepare pits and fissures for bonding to the sealant. Unlike traditional sealants which require phosphoric acid etching, demineralizing and dehydrating healthy teeth, Shofu's self-etching primer is significantly less acidic helping to preserve healthy tooth structure.



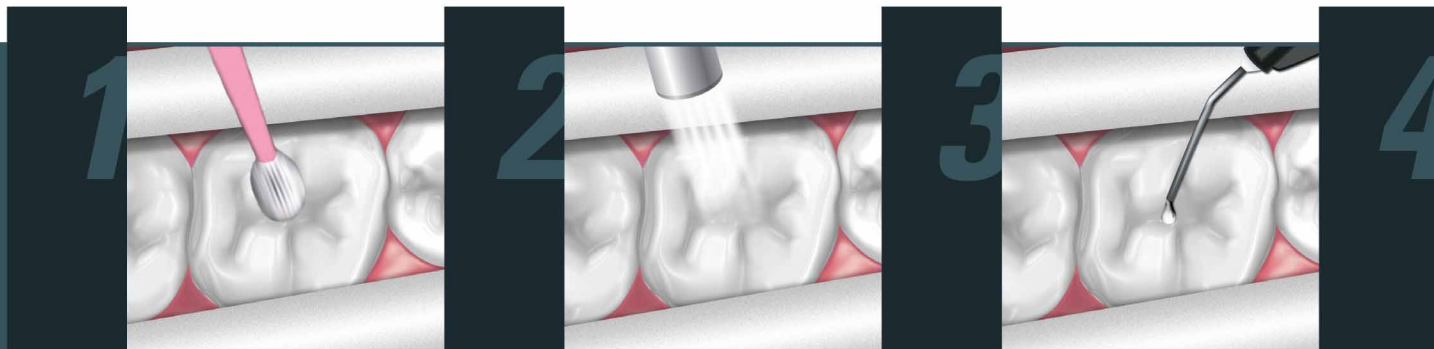
Dr. Satoshi Fukumoto, Tohoku University, Japan

BeutiSealant is an easy to apply sealant optimized for smooth, bubble-free consistency. Achieve precise delivery of up to 100 teeth sealed with our 1.2 gram syringe made possible by our specially designed no-ooze/no-waste syringe, and a fine gauge needle tip.



Dr. Satoshi Fukumoto, Tohoku University, Japan

SEM photos of deep penetration into fissures



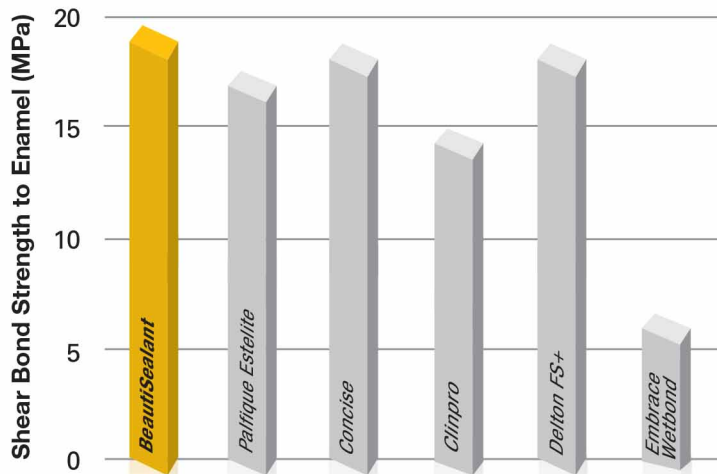
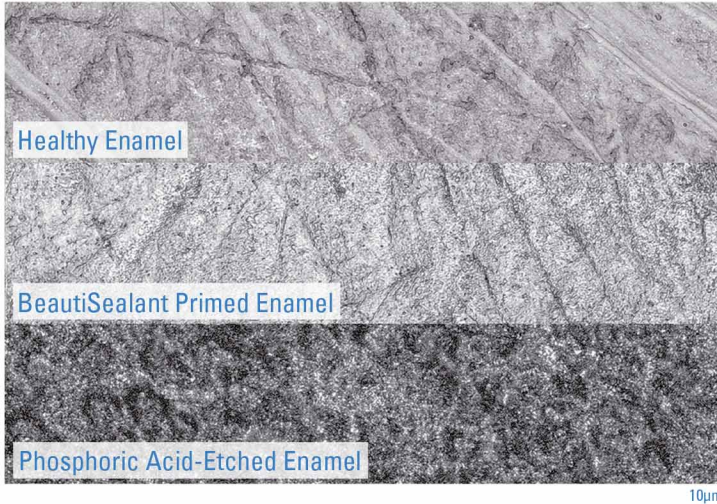
One: Apply **Primer** to clean tooth and leave for 5 seconds.

Two: Gently air dry for 5 seconds.

Three: Apply **Sealant**.

& FISSURE SEALANT SEE!

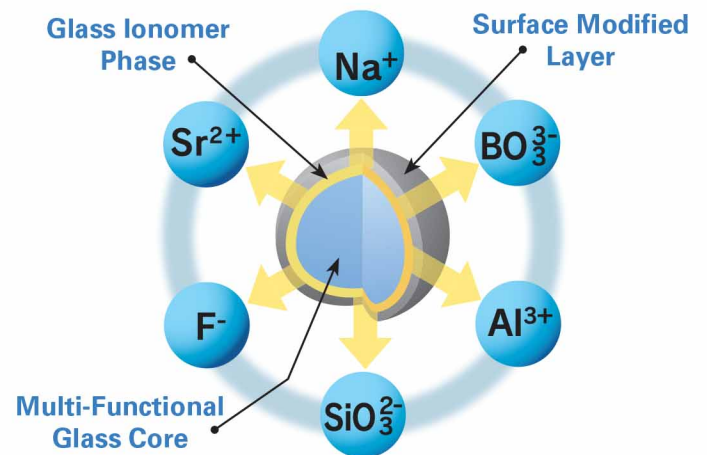
No Acid Etch – A Difference You Can See



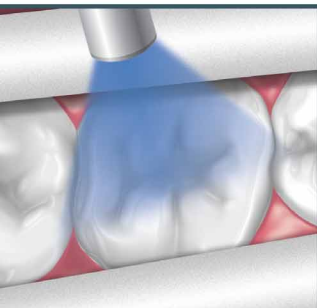
Despite the lack of phosphoric acid etching and a HEMA-free composition, shear bond strengths remain at levels that meet or exceed market leading sealants at 19.5MPa.

What's a Giomer?

Giomer refers to any product containing Shofu's proprietary Surface Pre-Reacted Glass, or S-PRG filler particles. S-PRG filler uniquely releases 6 ions: Fluoride, Sodium, Strontium, Aluminum, Silicate, Borate, all with known bioactive properties. Unlike glass ionomers and compomers which require water absorption following photocure to release fluoride; Giomer's contain a multifunctional glass core that undergoes an acid-base reaction during manufacturing and is subsequently protected by a surface modified layer. This trilaminar structure forms a type of stable glass ionomer which allows ion release and recharge to take place, while protecting the glass core from the damaging effects of moisture, greatly improving long-term durability. With its unique Giomer chemistry, BeautiSealant is therefore able to recharge its fluoride ions from household dental hygiene products such as toothpaste, providing sustained benefits to adjacent tooth structure over the life of the sealant.



Learn more, watch the acid neutralization video.



Four: Light cure with a halogen (20 seconds) or LED (10 seconds) curing light.

PRG
Technology
Giomer

Key Features of Giomer Materials

S-PRG filler material has been clinically shown to:

- Recharge fluoride when treated with fluoridated products
- Decrease acid production of cariogenic bacteria
- Neutralize acid on contact
- Demonstrate an anti-plaque effect

BeutiSealant

Fluoride Releasing Pit & Fissure Sealant System

www.shofu.com



1-800-827-4638



Order Information

- **BeutiSealant System** (Item No. 1798)
BeutiSealant Paste 1.2g, BeutiSealant Primer 3mL, 15 Needle Tips, 50 Microbrush Fine (pink), 25 V-Dish, Directions for Use
- BeutiSealant Paste 1.2g (Item No. 1799)
- BeutiSealant Primer 3mL (Item No. 1800)
- BeutiSealant Needle Tips 50 (Item No. 1794)

PRG Barrier Coat (Item No. 1786)

8 Base Units 0.02ml each, 1 Active 0.09ml, 8 brushes



NOW IN TIPS!



BEAUTIFIL® Flow Plus F00 (Zero Flow) weight: 2.2grams

Shade	Item No. / Tips
A0.5	2000 / 2200
A1	2001 / 2201
A2	2002 / 2202
A3	2003 / 2203
A3.5	2004 / 2204
A4	2005 / 2205
A0.5O	2006 / 2211
A1O	2007 / 2212
A2O	2008 / 2213
B1	2062 / 2206
B2	2063 / 2207
C2	2064 / 2208
D2	2065 / 2209
Incisal	2010 / 2215
Bleach White	2011 / 2216



BEAUTIFIL® Flow Plus F03 (Low Flow) weight: 2.2grams

Shade	Item No. / Tips
A0.5	2013 / 2218
A1	2014 / 2219
A2	2015 / 2220
A3	2016 / 2221
A3.5	2017 / 2222
A4	2018 / 2223
A2O	2020 / 2229
A3O	2021 / 2230
B1	2066 / 2224
B2	2067 / 2225
C2	2068 / 2226
D2	2069 / 2227
Incisal	2023 / 2232
Bleach White	2024 / 2233
Milky White	2026 / 2235
Cervical	2027 / 2236

USA
Shofu Dental Corporation
1225 Stone Drive
San Marcos, CA 92078-4059, USA

JAPAN
Shofu Inc.
11 Kamitakamatsu-cho
Fukuine, Higashiyama-ku
Kyoto 605-0983, Japan

SINGAPORE
Shofu Inc. Singapore Branch
10 Science Park Road #03-12
The Alpha, Science Park II
Singapore 117684

U.K.
SHOFU UK Riverside House,
River Lawn Road,
Tonbridge,
Kent, TN9 1EP, UK

CHINA
Shofu Dental Supplies (Shanghai) Co. Ltd.
No.645 Jiye Road
Seshan Industry Park
Songjiang 201602,
Shanghai, China

GERMANY
EU Representative:
Shofu Dental GmbH
Am Brüll 17
40878 Ratingen, Germany